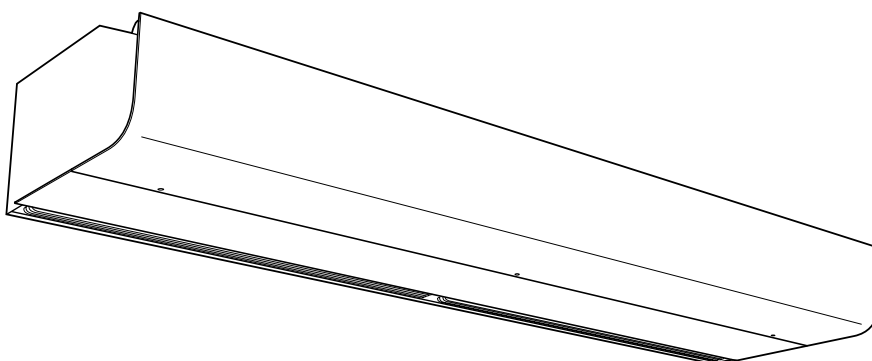
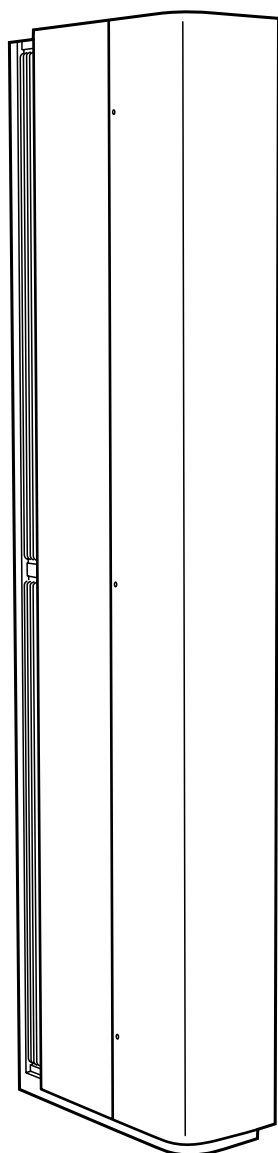


Instruction

Replacing water coil

PA3500W/PA4200W



Tools needed:

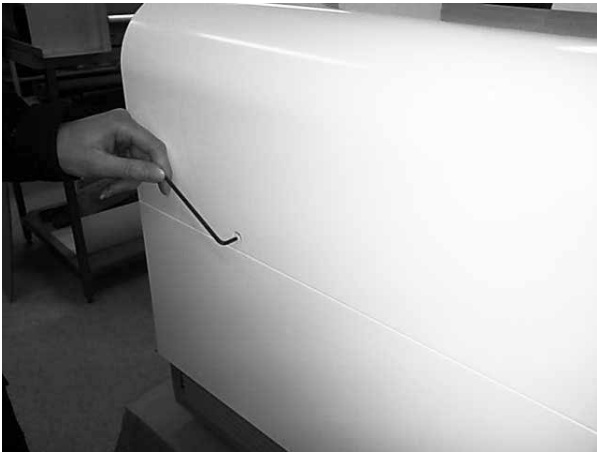
- Screwdriver +, PZ1 and PH2
- Allen key, size 3
- Torx screwdriver T20
- Pop rivets 4,8x8 (1x)
- Pop rivet pliers
- Drilling machine, drill Ø5

Water coil article numbers

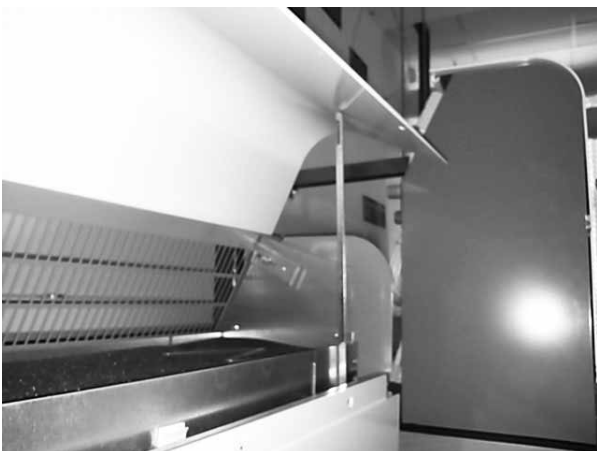
PA3510WL	207279	PA4210WL	207286
PA3510WLL	208961	PA4210WLL	208965
PA3510WH	209082	PA4210WH	209086
PA3515WL	207281	PA4215WL	207289
PA3515WLL	208962	PA4215WLL	208966
PA3515WH	209083	PA4215WH	209087
PA3520WL	207283	PA4220WL	207291
PA3520WLL	208963	PA4220WLL	208967
PA3520WH	209084	PA4220WH	209088
PA3525WL	207285	PA4225WL	207293
PA3525WLL	208964	PA4225WLL	208968
PA3525WH	209085	PA4225WH	209089



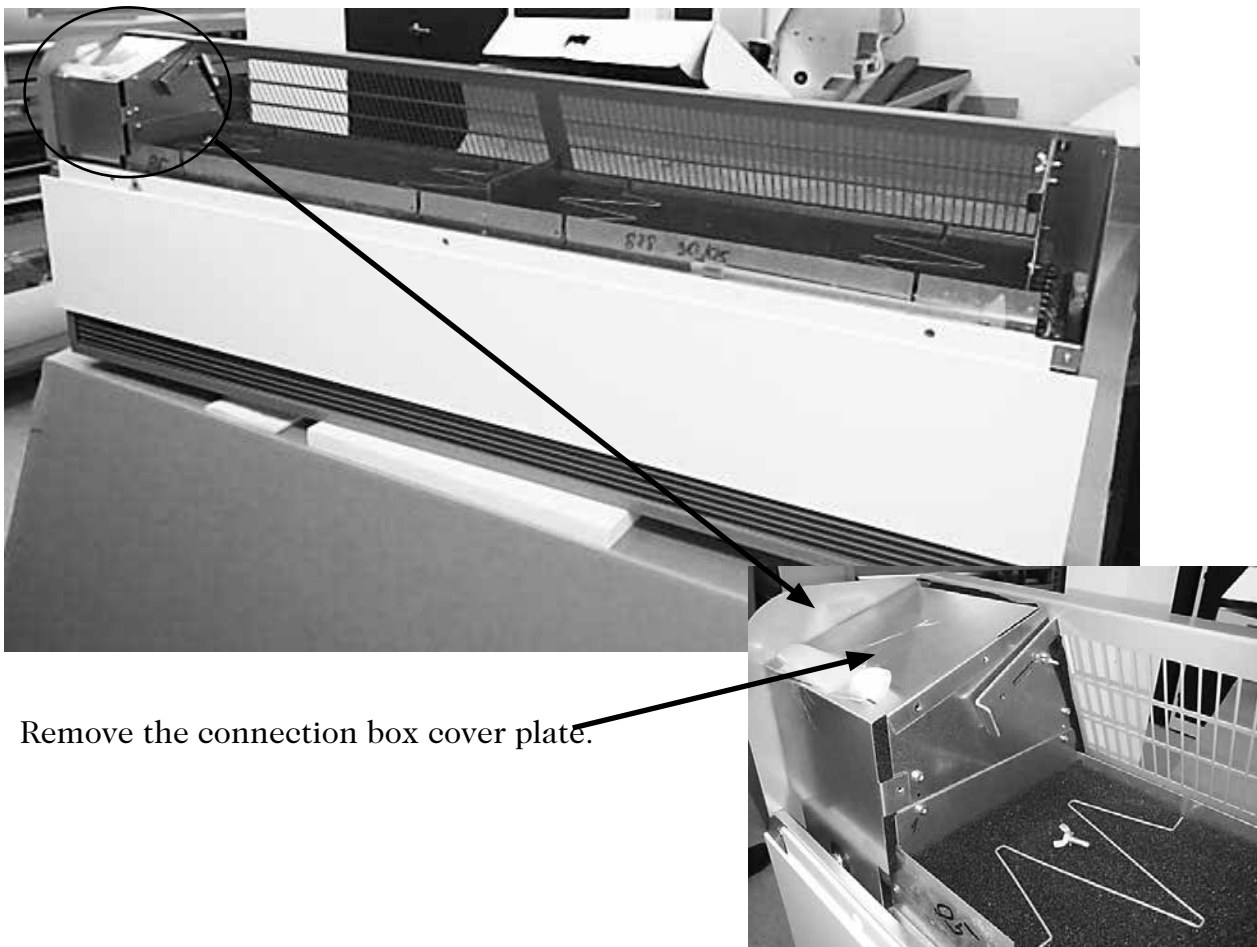
Detach the front plate by removing the allen key screws.



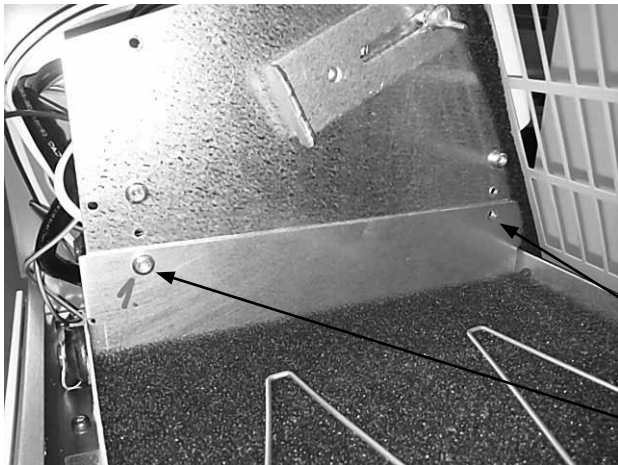
The front shall be locked in open position using the front hatch hook.
The hook should afterwards be removed from the old coil to be refitted on the new coil.



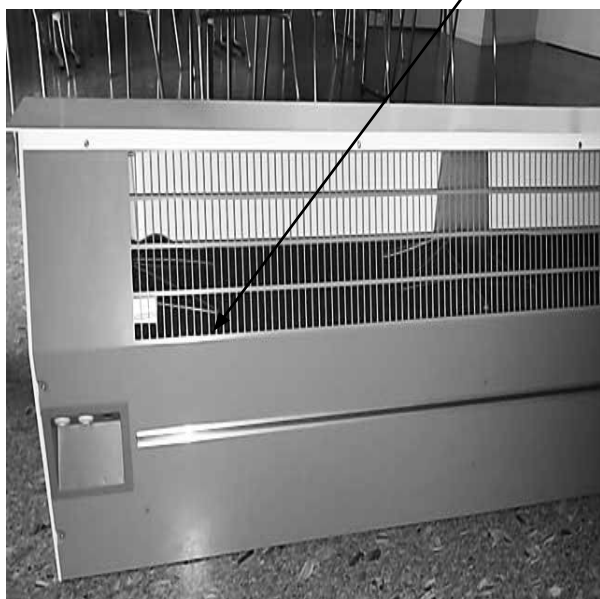
To remove the front plate, the locking devices on both sides must be loosened. Loosen one wing nut and remove the other.
Remove the front plate.



Detach the water coil by removing the torx-screws in the end caps, front and back of the water coil.



Torx-screws

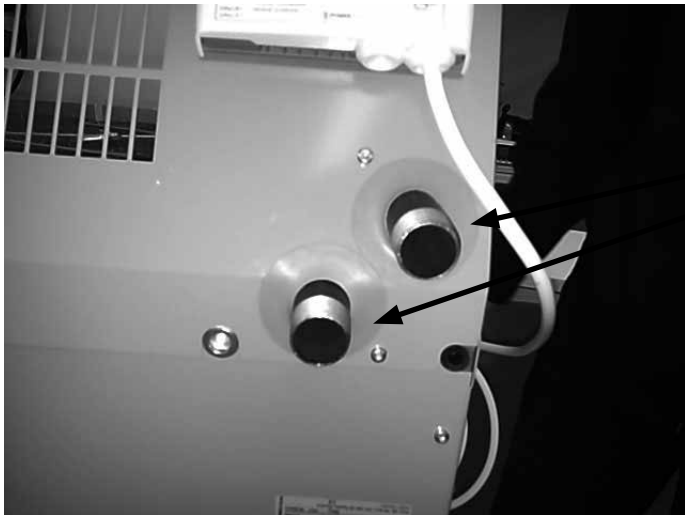


The screws in the back of the coil are accessible through the inlet grille with a torx-screw driver.



Remove the water pipe sealings.

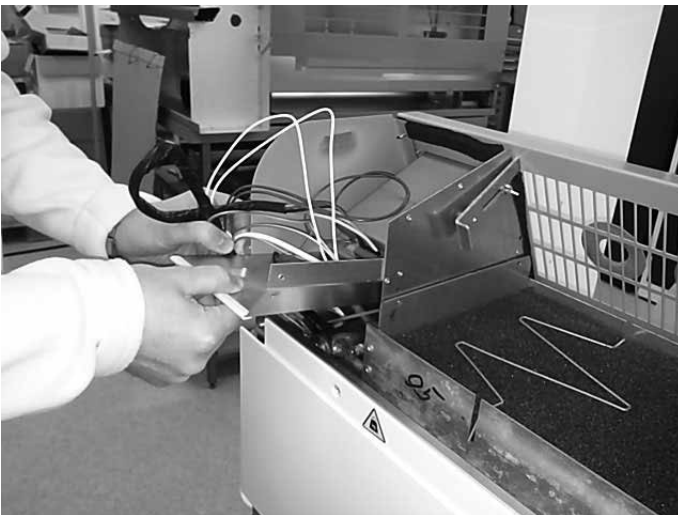
Note that the sealings shall be refitted when the new coil is mounted!



Sealings

This instruction is only valid for PA3500W

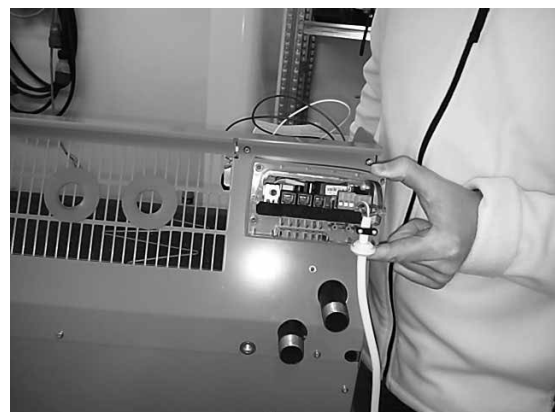
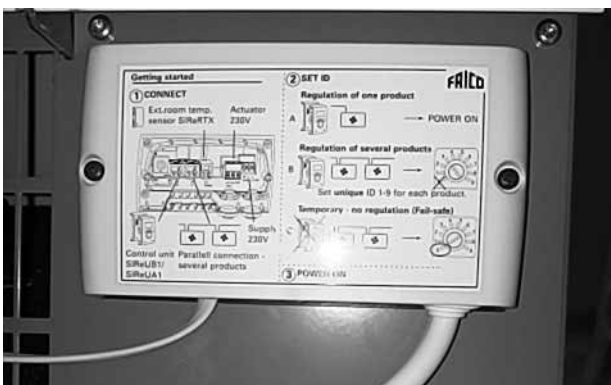
Remove the connection box cover plate, only valid for model PA3500W.



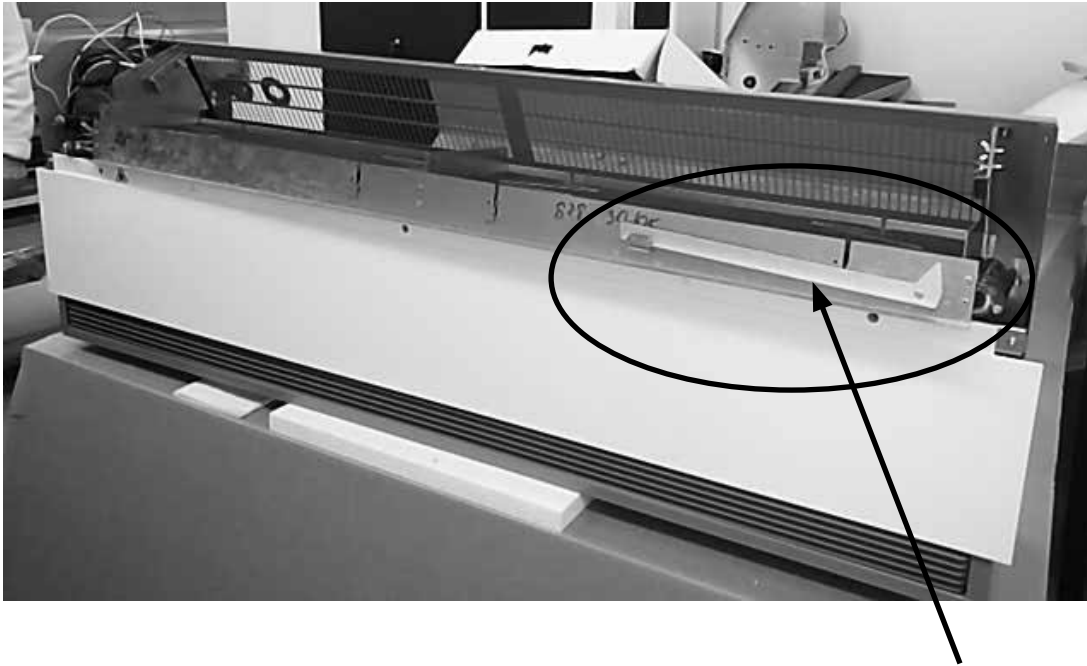
The pc board SIREB1 must be loosened and pulled out a bit to be able to remove the water coil.

Remove the lid of the pc board, use screwdriver PZ1.

Use screwdriver PH2 to loosen the 4 screws holding the SIREB1 to the body of the air curtain.



Now it's possible to detach the water coil.



When the coil is detached, the pop rivet holding the front hatch locking device shall be drilled out and be refitted on the new coil with a new pop rivet.

Mounting of the new coil is made in the reverse order.

Main office

Frico AB
Box 102
SE-433 22 Partille
Sweden

Tel: +46 31 336 86 00
Fax: +46 31 26 28 25
mailto:mailbox@frico.se
www.frico.se

For your local contact: www.frico.se